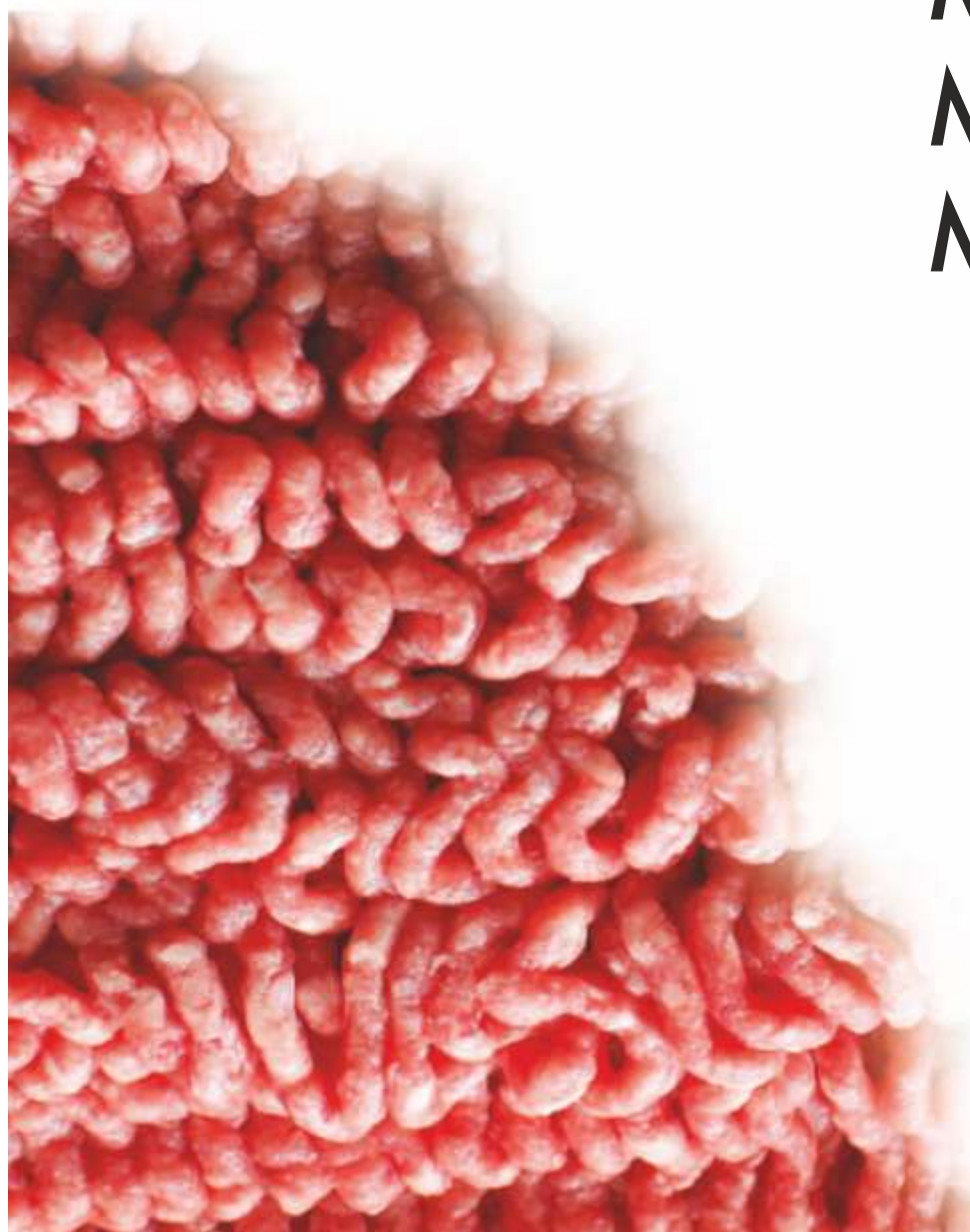


MEAT MINCING MACHINES





NO:12



Product Code	UKM-12
Power	220V - 50Hz
Capacity	125 Kg/h
Speed	160 rpm
Input Power	0,55 Kw - 0,75 /hp
Net Dimensions and Weight	27x61x32 cm. / 30 kg.
Packet Dimensions and Weight	31x65x41 cm. / 34 kg.
Net (m3)	0,083
Price	767 USD

- Cast iron spheroidal head, feeding screw, lock nut
- Easy to demount and clean.
- Stainless steel housing and meat tray
- Forward and backward operation system

- MEAT MINCING
- WITH HEAD COOLING
- WITH TERPONS SEPARATION SYSTEM
- DOUGH KNEADIN
- SPIRAL DOUGH MIXER
- PLANETARY MIXER
- DOUGH ROLL
- BREAD SLICING
- ONION CHOPPING
- GRINDER
- CUTTER
- POTATO PEELING
- VEGETABLE CUTTER
- CERTIFICATES



NO:22



Product Code	UKM-22M	UKM-22T
Power	220V - 50Hz	380V - 50Hz
Capacity	400 Kg/h	400 Kg/h
Speed	225 rpm	225 rpm
Input Power	1,5 Kw - 2 hp	1,5 Kw - 2 hp
Net Dimensions and Weight	29x74x40 cm. / 60 kg.	29x74x40 cm. / 60 kg.
Packet Dimensions and Weight	31x80x43 cm. / 63 kg.	31x80x43 cm. / 63 kg.
Net (m3)	0,11	0,11
Price	1.035 USD	1.000 USD

- Cast iron spheroidal head, feeding screw, lock nut
- Stainless steel housing and meat tray
- Forward and backward operation system



NO:32



Product Code	UKM-32M	UKM-32T
Power	220V - 50Hz	380V - 50Hz
Capacity	600 Kg/h	600 Kg/h
Speed	217 rpm	236 rpm
Input Power	2,2 Kw - 3 hp	3 Kw - 4 hp
Net Dimensions and Weight	32x87x41 cm. / 82 kg.	32x87x41 cm. / 82 kg.
Packet Dimensions and Weight	39x90x49 cm. / 85 kg.	39x90x49 cm. / 85 kg.
Net (m3)	0,17	0,17
Price	1.270 USD	1.200 USD

- Cast iron spheroidal head, feeding screw, lock nut
- Stainless steel housing and meat tray
- Forward and backward operation system

- MEAT MINCING
- WITH HEAD COOLING
- WITH THERMOS SEPARATION SYSTEM
- DOUGH KNEADIN
- SPRAL DOUGH MIXER
- PLANETARY MIXER
- DOUGH ROLL
- BREAD SLICING
- ONION CHOPPING
- GRINDER
- CUTTER
- POTATO PEELING
- VEGETABLE CUTTER
- CERTIFICATES



NO:12



Product Code	UKM-12P
Power	220V - 50Hz
Capacity	125 Kg/h
Speed	160 rpm
Input Power	0,55 Kw - 0,75 /hp
Net Dimensions and Weight	27x61x32 cm. / 30 kg.
Packet Dimensions and Weight	31x65x41 cm. / 34 kg.
Net (m3)	0,083
Price	1.100 USD

- Stainless steel head, feeding screw, lock nut
- Easy to demount and clean.
- Stainless steel housing and meat tray
- Forward and backward operation system



NO:22



Product Code	UKM-22PM	UKM-22PT
Power	220V - 50Hz	380V - 50Hz
Capacity	400 Kg/h	400 Kg/h
Speed	225 rpm	225 rpm
Input Power	1,5 Kw - 2 hp	1,5 Kw - 2 hp
Net Dimensions and Weight	29x74x40 cm. / 60 kg.	29x74x40 cm. / 60 kg.
Packet Dimensions and Weight	31x80x43 cm. / 63 kg.	31x80x43 cm. / 63 kg.
Net (m3)	0,11	0,11
Price	1.670 USD	1.635 USD

- Stainless steel head, feeding screw, lock nut
- Stainless steel housing and meat tray
- Forward and backward operation system

MEAT MINCING

WITH HEAD COOLING

WITH THERMOPANS SEPARATION SYSTEM

DOUGH KNEADIN

SPIRAL DOUGH MIXER

PLANETARY MIXER

DOUGH ROLL

BREAD SLICING

ONION CHOPPING

GRINDER

CUTTER

POTATO PEELING

VEGETABLE CUTTER

CERTIFICATES



NO:32



Product Code	UKM-32PM	UKM-32PT
Power	220V - 50Hz	380V - 50Hz
Capacity	600 Kg/h	600 Kg/h
Speed	217 rpm	236 rpm
Input Power	2,2 Kw - 3 hp	3 Kw - 4 hp
Net Dimensions and Weight	32x87x41 cm. / 82 kg.	32x87x41 cm. / 82 kg.
Packet Dimensions and Weight	39x90x49 cm. / 85 kg.	39x90x49 cm. / 85 kg.
Net (m3)	0,17	0,17
Price	1.870 USD	1.800 USD

- Stainless steel head, feeding screw, lock nut
- Stainless steel housing and meat tray
- Forward and backward operation system



NO:42



Product Code	UKM-42PT
Power	380V - 50Hz
Capacity	800 Kg/h
Speed	217 rpm
Input Power	5,5 Kw - 7,5 hp
Net Dimensions and Weight	47x101x47 cm. / 125 kg.
Packet Dimensions and Weight	48x105x60 cm. / 145 kg.
Net (m3)	0,3
Price	5.000 USD

- Stainless steel head, feeding screw, lock nut
- Stainless steel housing and meat tray
- Forward and backward operation system

- MEAT MINCING
- WITH HEAD COOLING
- WITH THERMOPANS SEPARATION SYSTEM
- DOUGH KNEADING
- SPIRAL DOUGH MIXER
- PLANETARY MIXER
- DOUGH ROLL
- BREAD SLICING
- ONION CHOPPING
- GRINDER
- CUTTER
- POTATO PEELING
- VEGETABLE CUTTER
- CERTIFICATES

With Stand 

NO:42



Product Code	UKM-42PTA
Power	380V - 50Hz
Capacity	800 Kg/h
Speed	217 rpm
Input Power	5,5 Kw - 7,5 hp
Net Dimensions and Weight	50x101x122 cm. / 140 kg.
Packet Dimensions and Weight	55x110x137 cm. / 175 kg.
Net (m3)	0,83
Price	5.500 USD

- Stainless steel head, feeding screw, lock nut
- Stainless steel housing and meat tray
- Forward and backward operation system
- Stainless steel stand on castor wheels



NO:130



Product Code	UKM-130PT
Power	380V - 50Hz
Capacity	1500 Kg/h
Speed	225 rpm
Input Power	11,5 Kw - 15 hp
Net Dimensions and Weight	65x125x125 cm. / 300 kg.
Packet Dimensions and Weight	75x135x145 cm. / 350 kg.
Net (m3)	1,5
Price	10.670 USD

- Stainless steel head, feeding screw, lock nut
- Stainless steel housing and meat tray
- Forward and backward operation system
- On castor wheels

- MEAT MINCING
- WITH HEAD COOLING
- WITH TERPONS SEPARATION SYSTEM
- DOUGH KNEADIN
- SPRAL DOUGH MIXER
- PLANETARY MIXER
- DOUGH ROLL
- BREAD SLICING
- ONION CHOPPING
- GRINDER
- CUTTER
- POTATO PEELING
- VEGETABLE CUTTER
- CERTIFICATES



Frozen Meat Mincing Machine



NO:130



Product Code	UKM-130PTD
Power	380V - 50Hz
Capacity	1500 Kg/h
Speed	140-280 rpm
Input Power	3,5 Kw - 5,5 Kw / 5 Hp - 7,5 Hp
Net Dimensions and Weight	65x135x130 cm. / 310 kg.
Packet Dimensions and Weight	75x145x150 cm. / 360 kg.
Net (m3)	1,65
Price	16.000 USD

- Stainless steel head, feeding screw, lock nut
- Stainless steel housing and meat tray
- Forward and backward operation system
- On castor wheels
- Speed control device is optional.

Speed control device net price 350 USD.

MEAT MINCING MACHINES WITH HEAD COOLING



MEAT MINCING

WITH HEAD COOLING

WITH TENDONS
SEPARATION SYSTEM

DOUGH KNEADIN

SPIRAL DOUGH MIXER

PLANETARY MIXER

DOUGH ROLL

BREAD SLICING

ONION CHOPPING

GRINDER

CUTTER

POTATO PEELING

VEGETABLE CUTTER

CERTIFICATES

With Head Cooling 

NO:22



Product Code	UKMS-22M	UKMS-22T
Power	220V - 50Hz	380V - 50Hz
Capacity	400 Kg/h	400 Kg/Saat
Speed	225 rpm	225 rpm
Input Power	1,5 Kw - 2 hp	1,5 Kw - 2 hp
Net Dimensions and Weight	32x79x43 cm. / 75 kg.	32x79x43 cm. / 75 kg.
Packet Dimensions and Weight	33x80x46 cm. / 78 kg.	33x80x46 cm. / 78 kg.
Net (m3)	0,12	0,12
Price	1.665 USD	1.635 USD

- Cast iron spheroidal head, feeding screw, lock nut
- Stainless steel housing and meat tray
- Forward and backward operation system
- Cooling system

NO:22

With Head Cooling 



Product Code	UKMS-22MY	UKMS-22TY
Power	220V - 50Hz	380V - 50Hz
Capacity	400 Kg/h	400 Kg/h
Speed	225 rpm	225 rpm
Input Power	1,5 Kw - 2 hp	1,5 Kw - 2 hp
Net Dimensions and Weight	29x96,5x40 cm. / 73 kg.	29x96,5x40 cm. / 73 kg.
Packet Dimensions and Weight	37x115x56 cm. / 100 kg.	37x115x56 cm. / 100 kg.
Net (m3)	0,23	0,23
Price	1.835 USD	1.800 USD

- Cast iron spheroidal head, feeding screw, lock nut
- Stainless steel housing and meat tray
- Forward and backward operation system
- Cooling system

MEAT MINCING

WITH HEAD COOLING

WITH TRIPONS SEPARATION SYSTEM

DOUGH KNEADING

SPIRAL DOUGH MIXER

PLANETARY MIXER

DOUGH ROLL

BREAD SLICING

ONION CHOPPING

GRINDER

CUTTER

POTATO PEELING

VEGETABLE CUTTER

CERTIFICATES

With Head Cooling



NO:32



Product Code	UKMS-32M	UKMS-32T
Power	220V - 50Hz	380V - 50Hz
Capacity	600 Kg/Saat	600 Kg/Saat
Speed	217 rpm	236 rpm
Input Power	2,2 Kw - 3 hp	3 Kw - 4 hp
Net Dimensions and Weight	36x88x48 cm. / 98 kg.	36x88x48 cm. / 98 kg.
Packet Dimensions and Weight	40x90x55 cm. / 108 kg.	40x90x55 cm. / 108 kg.
Net (m3)	0,2	0,2
Price	1.935 USD	1.865 USD

- Cast iron spheroidal head, feeding screw, lock nut
- Stainless steel housing and meat tray
- Forward and backward operation system
- Cooling system

NO:32

With Head Cooling



Product Code	UKMS-32M	UKMS-32T
Power	220V - 50Hz	380V - 50Hz
Capacity	600 Kg/h	600 Kg/h
Speed	217 rpm	236 rpm
Input Power	2,2 Kw - 3 hp	3 Kw - 4 hp
Net Dimensions and Weight	32x110x41 cm. / 95 kg.	32x110x41 cm. / 95 kg.
Packet Dimensions and Weight	37x115x56 cm. / 115 kg.	37x115x56 cm. / 115 kg.
Net (m3)	0,24	0,24
Price	2.100 USD	2.035 USD

- Cast iron spheroidal head, feeding screw, lock nut
- Stainless steel housing and meat tray
- Forward and backward operation system
- Cooling system

MEAT MINCING

WITH HEAD COOLING

WITH THERMONS SEPARATION SYSTEM

DOUGH KNEADING

SPIRAL DOUGH MIXER

PLANETARY MIXER

DOUGH ROLL

BREAD SLICING

ONION CHOPPING

GRINDER

CUTTER

POTATO PEELING

VEGETABLE CUTTER

CERTIFICATES

With Head Cooling 

NO:22



Product Code	UKMS-22PM	UKMS-22PT
Power	220V - 50Hz	380V - 50Hz
Capacity	400 Kg/h	400 Kg/h
Speed	225 rpm	225 rpm
Input Power	1,5 Kw - 2 hp	1,5 Kw - 2 hp
Net Dimensions and Weight	32x79x43 cm. / 75 kg.	32x79x43 cm. / 75 kg.
Packet Dimensions and Weight	33x80x46 cm. / 78 kg.	33x80x46 cm. / 78 kg.
Net (m3)	0,12	0,12
Price	2.265 USD	2.235 USD

- Stainless steel head, feeding screw, lock nut
- Stainless steel housing and meat tray
- Forward and backward operation system
- Cooling system

NO:22

With Head Cooling 



Product Code	UKMS-22PM	UKMS-22PT
Power	220V - 50Hz	380V - 50Hz
Capacity	400 Kg/h	400 Kg/h
Speed	225 rpm	225 rpm
Input Power	1,5 Kw - 2 hp	1,5 Kw - 2 hp
Net Dimensions and Weight	29x96,5x40 cm. / 73 kg.	29x96,5x40 cm. / 73 kg.
Packet Dimensions and Weight	37x115x56 cm. / 100 kg.	37x115x56 cm. / 100 kg.
Net (m3)	0,23	0,23
Price	2.435 USD	2.400 USD

- Stainless steel head, feeding screw, lock nut
- Stainless steel housing and meat tray
- Forward and backward operation system
- Cooling system

MEAT MINCING

WITH HEAD COOLING

WITH TERPONS SEPARATION SYSTEM

DOUGH KNEADIN

SPIRAL DOUGH MIXER

PLANETARY MIXER

DOUGH ROLL

BREAD SLICING

ONION CHOPPING

GRINDER

CUTTER

POTATO PEELING

VEGETABLE CUTTER

CERTIFICATES

With Head Cooling



NO:32



Product Code	UKMS-32PM	UKMS-32PT
Power	220V - 50Hz	380V - 50Hz
Capacity	600 Kg/h	600 Kg/h
Speed	217 rpm	236 rpm
Input Power	2,2 Kw - 3 hp	3 Kw - 4 hp
Net Dimensions and Weight	32x87x41 cm. / 82 kg.	32x87x41 cm. / 82 kg.
Packet Dimensions and Weight	39x90x49 cm. / 85 kg.	39x90x49 cm. / 85 kg.
Net (m3)	0,17	0,17
Price	2.535 USD	2.465 USD

- Stainless steel head, feeding screw, lock nut
- Stainless steel housing and meat tray
- Forward and backward operation system
- Cooling system

NO:32

With Head Cooling



Product Code	UKMS-32PMY	UKMS-32PTY
Power	220V - 50Hz	380V - 50Hz
Capacity	600 Kg/Saat	600 Kg/h
Speed	217 rpm	236 rpm
Input Power	2,2 Kw - 3 hp	3 Kw - 4 hp
Net Dimensions and Weight	32x110x41 cm. / 95 kg.	32x110x41 cm. / 95 kg.
Packet Dimensions and Weight	37x115x56 cm. / 115 kg.	37x115x56 cm. / 115 kg.
Net (m3)	0,24	0,24
Price	2.700 USD	2.635 USD

- Stainless steel head, feeding screw, lock nut
- Stainless steel housing and meat tray
- Forward and backward operation system
- Cooling system

MEAT MINCING

WITH HEAD COOLING

WITH TRIPONS SEPARATION SYSTEM

DOUGH KNEADING

SPIRAL DOUGH MIXER

PLANETARY MIXER

DOUGH ROLL

BREAD SLICING

ONION CHOPPING

GRINDER

CUTTER

POTATO PEELING

VEGETABLE CUTTER

CERTIFICATES

With Head Cooling



NO:42



Product Code	UKMS-42PT
Power	380V - 50Hz
Capacity	800 Kg/h
Speed	217 rpm
Input Power	5,5 Kw - 7,5 hp
Net Dimensions and Weight	47x101x54 cm. / 150 kg.
Packet Dimensions and Weight	55x110x70 cm. / 170 kg.
Net (m3)	0,45
Price	5.670 USD

- Stainless steel head, feeding screw, lock nut
- Stainless steel housing and meat tray
- Forward and backward operation system
- Cooling system

NO:42

*With Head Cooling
With Stand*



Product Code	UKMS-42PTA
Power	380V - 50Hz
Capacity	800 Kg/h
Speed	217 rpm
Input Power	5,5 Kw - 7,5 hp
Net Dimensions and Weight	50x101x129 cm. / 165 kg.
Packet Dimensions and Weight	55x110x145 cm. / 200 kg.
Net (m3)	0,90
Price	6.170 USD

- Stainless steel head, feeding screw, lock nut
- Stainless steel housing and meat tray
- Forward and backward operation system
- Stainless steel stand on castor wheels
- Cooling system

MEAT MINCING

WITH HEAD COOLING

WITH THERMOS SEPARATION SYSTEM

DOUGH KNEADER

SPRINT DOUGH MIXER

PLANETARY MIXER

DOUGH ROLL

BREAD SLICING

ONION CHOPPING

GRINDER

CUTTER

POTATO PEELING

VEGETABLE CUTTER

CERTIFICATES

**MEAT
MINCING
MACHINE
WITH TENDONS
SEPARATION SYSTEM**





NO:32



Product Code	UKM-32PTS
Power	380V - 50Hz
Capacity	400 Kg/h
Speed	236 rpm
Input Power	3 Kw - 4 hp
Net Dimensions and Weight	32x87x41 cm. / 82 kg.
Packet Dimensions and Weight	39x90x49 cm. / 85 kg.
Net (m3)	0,17
Price	4.500 USD

- Stainless steel head, feeding screw, lock nut
- Stainless steel housing and meat tray
- Forward and backward operation system

MEAT MINCING

WITH HEAD COOLING

WITH TENDONS SEPARATION SYSTEM

DOUGH KNEADING

SPIRAL DOUGH MIXER

PLANETARY MIXER

DOUGH ROLL

BREAD SLICING

ONION CHOPPING

GRINDER

CUTTER

POTATO PEELING

VEGETABLE CUTTER

CERTIFICATES



NO:42



Product Code	UKM-42PTS
Power	380V - 50Hz
Capacity	600 Kg/h
Speed	217 rpm
Input Power	5,5 Kw - 7,5 hp
Net Dimensions and Weight	47x101x47 cm. / 125 kg.
Packet Dimensions and Weight	48x105x60 cm. / 145 kg.
Net (m3)	0,3
Price	7.335 USD

- Stainless steel head, feeding screw, lock nut
- Stainless steel housing and meat tray
- Forward and backward operation system



NO:130



MEAT MINCING

WITH HEAD COOLING

WITH TENDONS SEPARATION SYSTEM

DOUGH KNEADING

SPIRAL DOUGH MIXER

PLANETARY MIXER

DOUGH ROLL

BREAD SLICING

ONION CHOPPING

GRINDER

CUTTER

POTATO PEELING

VEGETABLE CUTTER

CERTIFICATES

Product Code	UKM-130PTS
Power	380V - 50Hz
Capacity	800 Kg/h
Speed	225 rpm
Input Power	11,5 Kw - 15 hp
Net Dimensions and Weight	65x125x125 cm. / 300 kg.
Packet Dimensions and Weight	75x135x145 cm. / 350 kg.
Net (m3)	1,5
Price	15.000 USD

- Stainless steel head, feeding screw, lock nut
- Stainless steel housing and meat tray
- Forward and backward operation system
- On castor wheels